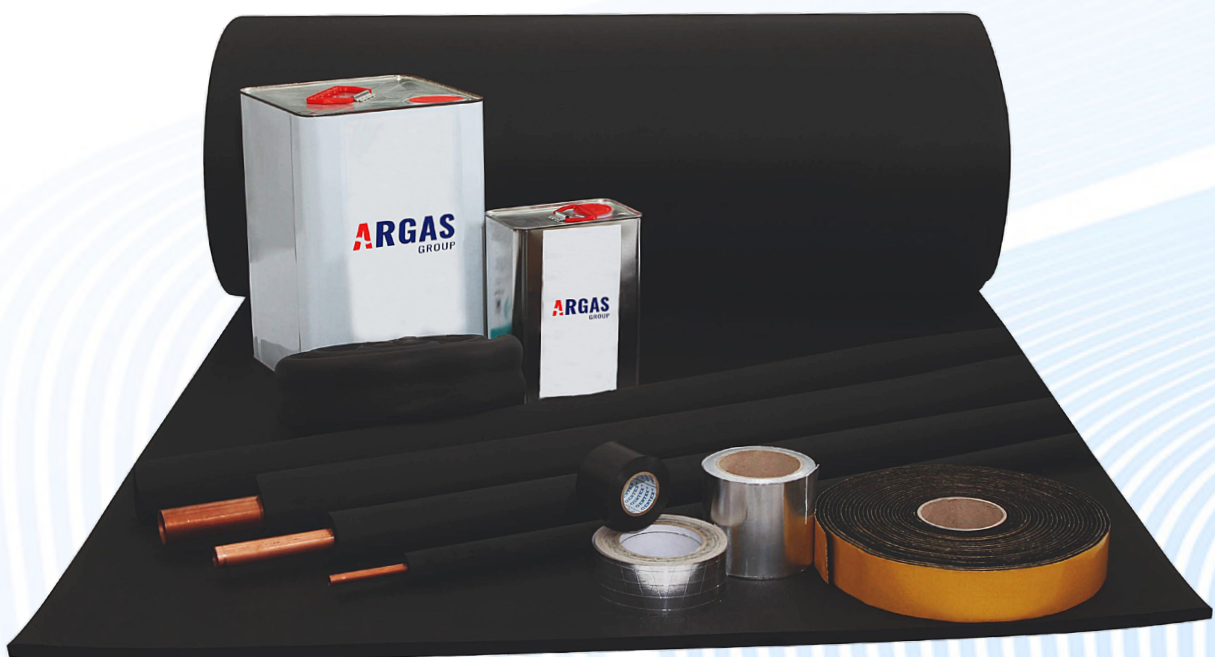




## Elastomeric Rubber Foam Catalogue



# ARGAS

## GROUP



Since our establishment in June 2023, Argas Group has been dedicated to delivering unparalleled service to our valued clients. With a wealth of international experience, we are proud to offer top-quality products at the most competitive prices in the market. Through a comprehensive analysis of the HVAC sector, we have identified gaps and have taken the initiative to provide an extensive product range that includes rubber insulation, duct flanges, air curtains, flexible ducts, insulation tapes, and more. Our commitment extends beyond product supply as we strive to provide our clients with expert advice tailored to their specific needs. At Argas Group, we are driven by our mission to ensure customer satisfaction through exceptional service and the highest quality offerings.



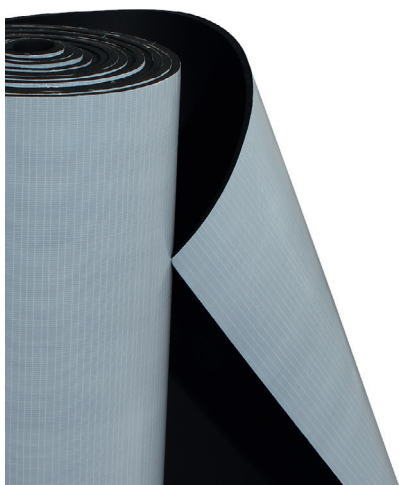
## **INDEX**

Rubber Insulation Materials  
Elastomeric Rubber Foam Insulation Pipes  
Auxiliary Products



## Elastomeric Rubber Foam

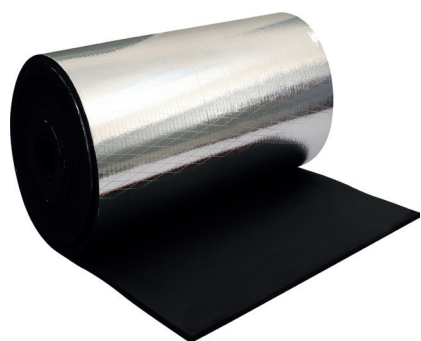
- ⚠ Wide Range of Thickness: They are available in 7 different thickness options, allowing for flexibility in insulation requirements.
- ⚠ Suitable for Duct Insulation: The insulation sheets are produced in the most suitable dimensions (1000 - 1200 mm) for insulating ducts, ensuring proper coverage and efficiency.
- ⚠ Reduced Waste Rate: These sheets help reduce waste rate in rectangular ducts by providing precise dimensions that fit well and minimize the need for trimming.
- ⚠ Cost Savings: In round-section ducts, elastomeric rubber foam insulation sheets reduce the use of tape and save overall costs, as they can be easily wrapped and secured without excessive taping.
- ⚠ Vibration Reduction: The flexible structure of the insulation sheets helps reduce vibration at the duct connection points, enhancing the stability and durability of the installation.
- ⚠ Recommended Adhesive: For proper bonding to the duct, it is recommended to use Argas Group Glue adhesive, which ensures a secure and long-lasting connection.
- ⚠ These features make elastomeric rubber foam insulation sheets a reliable and efficient choice for duct insulation applications.



## Elastomeric Rubber Foam With Self Adhesive

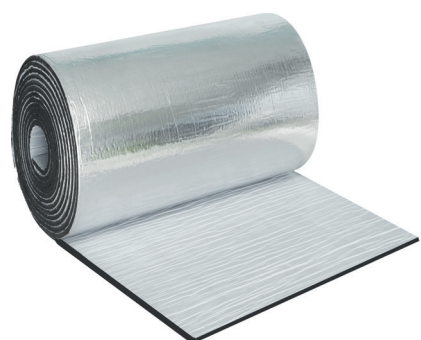
- ⚠ Time and Workmanship Savings: The self-adhesive feature enables quick and easy application, reducing the time and labor required for installation.
- ⚠ Complete Sealing: The self-adhesive provides a complete sealing, eliminating workmanship errors and ensuring an airtight and moisture-resistant insulation layer.
- ⚠ Reduced Waste Rate: With careful application, the waste rate can be minimized to 2-3%, resulting in cost savings and efficient material usage.
- ⚠ Suitable Dimensions: The insulation sheets are produced in dimensions (1000 - 1200 mm) that are most suitable for duct insulation, ensuring proper coverage and reducing the need for excessive trimming.
- ⚠ Vibration Reduction: The flexible structure of the elastomeric rubber foam helps reduce vibration at the duct connection points, enhancing the overall stability and performance of the system.
- ⚠ High Adhesion Endurance: The acrylic-based adhesive used in the self-adhesive foam ensures strong adhesion, providing long-lasting performance and durability.
- ⚠ Easy Assembly: The foam comes with a polypropylene (PP) carrying layer, which simplifies the assembly process and allows for easy handling during installation.
- ⚠ Overall, elastomeric rubber foam with self-adhesive offers convenience, efficiency, and reliable insulation properties for various duct applications.

	Sheet Width (1000 mm)	Sheet Width (1200 mm)	Sheet Width (1500 mm)
Thickness (mm)	m <sup>2</sup> / Roll	m <sup>2</sup> / Roll	m <sup>2</sup> / Roll
6	30m <sup>2</sup>	36m <sup>2</sup>	45m <sup>2</sup>
9	20m <sup>2</sup>	24m <sup>2</sup>	30m <sup>2</sup>
13	14m <sup>2</sup>	16,8m <sup>2</sup>	21m <sup>2</sup>
19	10m <sup>2</sup>	12m <sup>2</sup>	15m <sup>2</sup>
25	8m <sup>2</sup>	9,6m <sup>2</sup>	12m <sup>2</sup>
32	6m <sup>2</sup>	7,2m <sup>2</sup>	9m <sup>2</sup>
50	4m <sup>2</sup>	4,8m <sup>2</sup>	6m <sup>2</sup>



## Aluminum Foil Coated Elastomeric Rubber Foam

- ⚠ Aluminum Foil Coated Elastomeric Rubber Foam is a versatile insulation material combining elastomeric rubber foam with a layer of aluminum and polyester laminate coating. It enhances insulation performance and durability for various applications. The high-quality raw materials ensure optimal insulation and long-lasting performance. The insulation sheets are conveniently sized (1000 - 1200 mm) for duct insulation, minimizing trimming needs. The packaging protects the foam during storage and transportation. It offers quick installation, saving time and labor costs, while providing durability against mechanical impacts. In summary, aluminum foil coated elastomeric rubber foam is a reliable, high-performance insulation solution for duct applications.

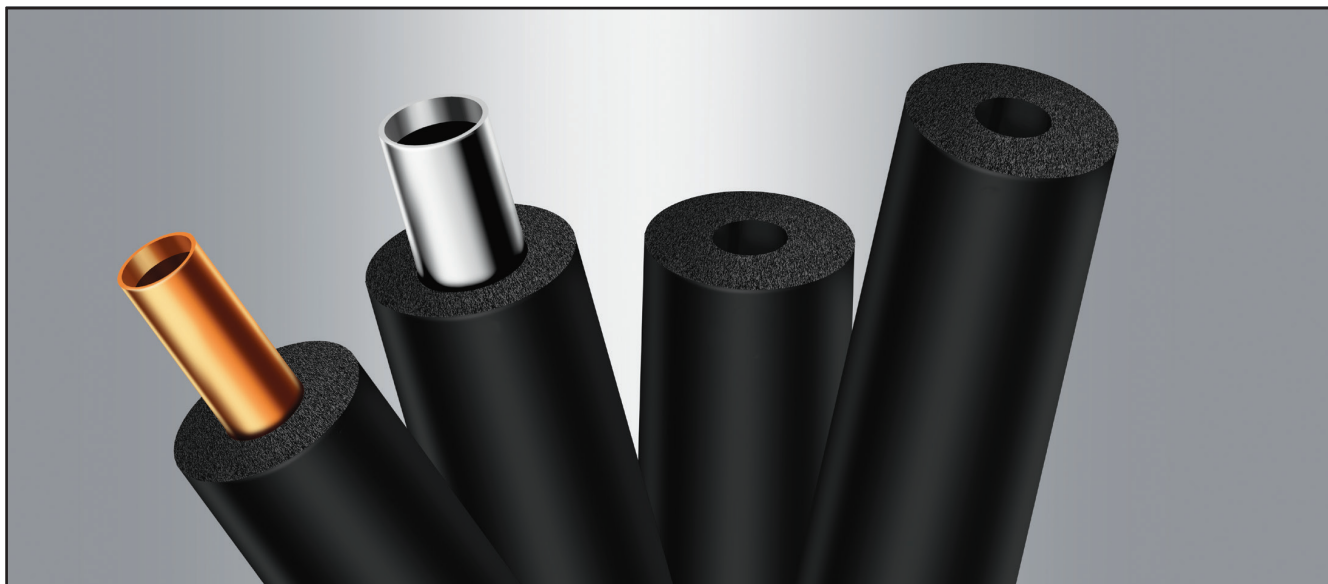


## Aluminum Foil Coated Elastomeric Rubber Foam With Self Adhesive

- ⚠ Aluminum Foil Coated Elastomeric Rubber Foam with Self-Adhesive PVC Layer and Polyester/Aluminum Lamination: This high-performance insulation material combines durability, ease of installation, and superior insulation properties. It features a reinforced PVC layer with polyester/aluminum lamination for added strength. Made from high-quality raw materials, it offers resistance against mechanical impacts. The self-adhesive backing eliminates the need for additional tapes or adhesives, saving time and labor costs during installation. Overall, it's a reliable choice for various applications, providing efficient insulation and protection.

Sheet Width (1000 mm)		Sheet Width (1200 mm)		Sheet Width (1500 mm)	
Thickness (mm)	m <sup>2</sup> / Roll	m <sup>2</sup> / Roll	m <sup>2</sup> / Roll	m <sup>2</sup> / Roll	m <sup>2</sup> / Roll
6	30m <sup>2</sup>	36m <sup>2</sup>	45m <sup>2</sup>		
9	20m <sup>2</sup>	24m <sup>2</sup>	30m <sup>2</sup>		
13	14m <sup>2</sup>	16,8m <sup>2</sup>	21m <sup>2</sup>		
19	10m <sup>2</sup>	12m <sup>2</sup>	15m <sup>2</sup>		
25	8m <sup>2</sup>	9,6m <sup>2</sup>	12m <sup>2</sup>		
32	6m <sup>2</sup>	7,2m <sup>2</sup>	9m <sup>2</sup>		
50	4m <sup>2</sup>	4,8m <sup>2</sup>	6m <sup>2</sup>		





Metric	Copper	Steel	6 mm (1/4")	9 mm (3/8")	13 mm (1/2")	19 mm (3/4")	25mm (1")	
mm	Inch	Inch	m/box	m/box	m/box	m/box	m/box	
6	1/4"	*	502	360	214	*	*	*
8	5/16"	*	442	308	194	*	*	*
10	3/8"	1/8"	408	262	174	96	*	*
12	1/2"	*	372	236	164	92	*	*
15	5/8"	1/4"	270	196	138	80	*	*
18	3/4"	3/8"	226	170	120	74	52	*
22	7/8"	1/2"	186	138	100	66	44	*
*25	1"	*	162	120	90	58	42	*
28	1 1/8"	3/4"	136	102	80	54	40	*
*32	*	*	120	96	70	50	30	*
35	1 3/8"	1"	102	80	60	42	28	
42	1 5/8"	1 1/4"	92	66	50	40	24	
48	*	1 1/2"	*	52	42	32	20	
*54	2 1/8"	*	*	50	38	30	18	
60	2 3/8"	2"	*	48	34	30	16	
*67-70	2 5/8"	*	*	46	34	22	16	
76	3"	2 1/2"	*	42	32	24	14	
*80	3 1/8"	*	*	40	32	20	14	
89	3 1/2"	3"	*	38	30	20	14	
*102	*	3 1/2"	*	36	24	18	14	
*108	4 1/4"	*	*	34	24	18	12	
114	4 1/2"	4"	*	32	22	18	12	



## Aluminum Foil Tapes

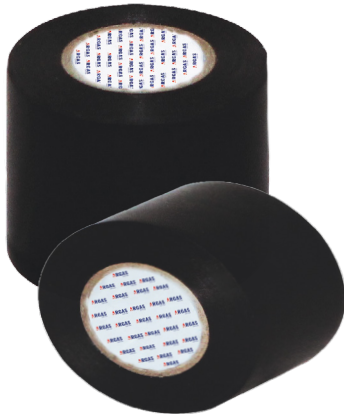
- ⚠ Aluminum foil tapes are specifically designed to provide an effective barrier and seal at the joint edges of aluminum foil coated insulation materials. These tapes come in various widths, including 50, 75, and 100 mm, allowing for flexibility in different application scenarios.
- ⚠ The primary purpose of these tapes is to ensure impermeability and prevent air leakage, maintaining the integrity of the insulation system. They can be used with or without reinforcement, depending on the specific requirements of the project.
- ⚠ To achieve optimal performance, it is essential to apply the tape onto a clean and dry surface. Any dirt, dust, or moisture on the surface may compromise the adhesive's effectiveness, leading to potential leaks or reduced sealing performance.
- ⚠ The aluminum foil tapes provide a reliable and durable solution for joining and sealing insulation materials, enhancing the overall efficiency and effectiveness of the insulation system.

## Rubber Tape



- ⚠ Rubber tape is a versatile adhesive tape designed for various insulation applications. It is commonly used to seal joints in rubber foam pipe and sheet insulation materials. Additionally, it is effective for insulating valves and handling challenging cross-section installations where traditional insulation methods may be difficult to apply.
- ⚠ Rubber tape is particularly suitable for insulating short pipes and can also be utilized for repairing damaged insulation, providing a convenient solution for insulation maintenance and repair tasks.
- ⚠ With width options of 50 mm, 75 mm, and 100 mm, rubber tape offers flexibility in selecting the appropriate size for different insulation requirements. Its adhesive backing ensures a secure and long-lasting bond, while its flexibility
- ⚠ By providing effective insulation and sealing properties, rubber tape helps maintain optimal thermal and acoustic performance while preventing energy loss and minimizing condensation. It is a reliable solution for achieving insulation integrity in a variety of applications.

## PVC Tape



- ⚠ PVC tape is a versatile adhesive tape manufactured by applying rubber derivative glue onto a PVC carrier. It offers excellent flexibility and strong adhesion strength (DR0790). This makes it suitable for a wide range of applications, including cable bundling, joining, and wrapping of rubber derivative sponge or insulation materials.
- ⚠ PVC tape is particularly useful in various joinings and additions that require electrical insulation. Its reliable adhesive properties ensure secure bonding and insulation, providing protection against electrical current leakage or short circuits.
- ⚠ For optimal performance, it is important to store PVC tape in suitable conditions. The storage area should maintain a temperature between a minimum of 5°C and a maximum of 30°C, with humidity below 60%. It is recommended to store the tape in closed packaging, away from direct exposure to heat, light, and sunlight.
- ⚠ When stored under these conditions, the shelf life of PVC tape is approximately 12 months. Regularly checking the storage conditions and using the product within the specified shelf life will ensure its effectiveness and reliability for your insulation and joining needs.

## Technical Specifications

<b>Total Thickness</b>	0,1300 mm (± 0,010 mm)
<b>Tensile Strength</b>	4.7 kg / 25 mm
<b>Rupture Strength</b>	%150
<b>Glue</b>	0,34 kg / 19 mm
<b>Voltage Resistance</b>	400 volts
<b>Length</b>	25 yarda
<b>Width</b>	50 mm

## Duct Sealing Gasket



- ⚠ Duct sealing is an essential process used to ensure the impermeability of flange systems against various external factors such as water, dust, smoke, and oil. It involves the application of sealing materials or techniques to prevent the ingress or leakage of these substances into the duct system.
- ⚠ By effectively sealing the flange connections, potential issues caused by water, dust, smoke, and oil infiltration can be avoided. This includes preventing water leaks that could damage the duct system, keeping dust particles from entering and accumulating inside the ducts, preventing the spread of smoke in case of a fire, and protecting the ducts from oil contamination that could affect their performance or integrity.
- ⚠ Duct sealing is an important step in maintaining the efficiency, safety, and longevity of flange systems. It helps to ensure that the ducts remain sealed and isolated from external factors, allowing them to function optimally and meet the necessary standards and requirements.

CODE	TYPE	DIMENSIONS (MM)	IN BOX QUANTITY
ARGST135	EVA	13mm X 5mm	850 meter
ARGST155	EVA	15mm X 5mm	750 meter
ARGST185	EVA	18mm X 5mm	600 meter
ARGST205	EVA	20mm X 5mm	550 meter
ARGST255	EVA	25mm X 5mm	440 meter





## Single Component Solvent Based Glue

- ⚠ Glue Spray Single Component Solvent Based Glue is a product used to effectively attach acoustic insulation, polyethylene, and rubber insulation onto pipe air duct installations. It has been specifically developed as a reliable alternative to traditional
- ⚠ To ensure optimal bonding strength, it is important to bond the surfaces quickly after applying the glue. By adhering to the appropriate drying time, the maximum bonding power can be achieved. It is worth noting that the drying time and reaction of the glue may vary depending on the temperature conditions at the construction site. Therefore, if fast drying is required, this product is highly recommended
- ⚠ In cases where the air temperature becomes extremely hot or cold, special attention should be given to the drying time to ensure the desired results. By following these guidelines, the Argas Group Single Component Solvent Based Glue provides a reliable and efficient solution for various pipe air duct insulation applications.

## Properties

<b>Appearance</b>	Honey - coloured fluid
<b>Chemical Composition</b>	Synthetic rubber
<b>Viscosity, DIN 53211</b>	10±2 sn (8 mm 20 °C Fortkap)
<b>Dry Substance Content</b>	% 40 + 1
<b>Specific Gravity</b>	Approx 1,2 gr/cm³
<b>Volatility % Weight</b>	Approx % 60
<b>Flash Point</b>	Non - flashing
<b>Drying Point</b>	5 - 10 minutes (depends on the environment temperature)
<b>Boiling Point</b>	40 °C - 70 °C

## Storage Conditions

- ⚠ Store under 25°C. Shelf life is 1 year as of production date.

## ATTENTION

- ⚠ In consideration with the fact that it is a solvent based product, it must be used in environments ventilated continuously and efficiently to ensure occupational safety and health.



**ARGAS GROUP İÇ VE DİŐ TİCARET LTD. ŐTİ.**

**Yeniőehir Mahallesi, Osmanlı Bulvarı No:11/A 28, Kurtkőy,Pendik/İstanbul/Türkiye**

**[www.argasgroup.com](http://www.argasgroup.com)**